

FEATURES/BENEFITS

- **Meets CableLabs® Cable Broadband Intercept Specification (CBIS)**
Provides full CALEA compliance and safe harbor
- **Fast: Performs deep packet inspection at wire speeds**
Host processor, with multiple packet inspection accelerators (PIXLS), supports multiple 1Gbps interfaces.
- **Self-Contained: Less expensive to purchase and less expensive to maintain**
Incorporates probe, mediation, and administration functions in a single package. No expensive monthly service fees.
- **Drop in/turnkey solution**
Can be installed and configured in minutes using browser-based setup screens. Completely passive installation via Ethernet taps. No third-party involved, so service provider maintains full control and privacy.
- **Flexible and extensible to serve other service provider surveillance needs**
Open Surveillance Module™ architecture enables use for other surveillance applications, such as detecting network abuse or unusual traffic

High Performance Compliant Solution for Cable Operators

The IP Fabrics DeepSweep™ for CALEA is the first self-contained network surveillance system to offer broadband CALEA compliance by implementing CBIS. Ideal for small and medium-sized cable operators, a single DeepSweep system functions as the complete CALEA compliance solution, providing the access, mediation, and temporary buffering/delivery functions, which are commonly implemented as separate systems. Furthermore, DeepSweep can easily be configured to support VoIP CALEA compliance. DeepSweep offers users compliance and safe harbor by fully implementing CableLabs® CBIS, ATIS T1.678 v2, and other industry standards.

DeepSweep has the capability to fully inspect every network packet, so it doesn't need to rely on CMTSs, switches, routers or other probes for filtering and intercept. Additionally, the DeepSweep can assimilate and format the intercepted data and either securely buffer or deliver it in the standardized manners to the law enforcement agency (LEA) collection systems. Lastly, the DeepSweep user-interface is a set of intuitive and secure browser pages that are accessible locally or from a network-attached remote system.

DeepSweep for CALEA comes in three basic models. The first two are for Broadband Internet Access and Services CALEA compliance. They adhere to either Cablelabs® CBIS or ATIS-1000013.2007 (or both) and include many key features, such as the ability to specify subject IDs as MAC addresses, IP addresses, DHCP option 82 IDs, subject IDs via text string, pen-register, trap-and-trace, and full content intercepts. Both models will seamlessly integrate with the DeepSweep Secure Buffered Delivery systems or other buffering systems that comply with either the CBIS BIF functionality or the ATIS-1000021 specification.

DeepSweep™ for CALEA CBIS-Compliant Surveillance System



IP Fabrics' DeepSweep for CALEA is the industry's first CBIS-compliant system for broadband intercept and CALEA compliance.

The third DeepSweep model is for VoIP CALEA compliance. It adheres to ATIS T1.678 and includes key features such as the ability to specify subject IDs by host, address, or telephone, pen-register, trap-and-trace, full content intercepts, and fully configurable collection system addresses.

All DeepSweep for CALEA models support multiple concurrent cases, each with potentially multiple subjects and each dynamically updatable. Additionally, models can easily be configured for both VoIP and broadband CALEA compliance.

High Performance, Scalable Architecture

IP Fabrics' Surveillance Module™ architecture and underlying patent-pending, multi-core virtualization technology give DeepSweep many unique advantages over basic "PC-based" surveillance systems or hard-wired ASIC-based systems. DeepSweep's internal host processors and multi-core packet inspection accelerators allow it to monitor multiple 1Gbps Ethernet links at true wire-speed with full layer 2-7 inspection capabilities.

The modular system architecture enables DeepSweep to be used as a stand-alone network surveillance system or in conjunction with other security/surveillance systems (e.g., as a pre-filter), and even supports hosting user-applications on the system processor. The architecture is also highly scalable, allowing multiple DeepSweeps to be configured in parallel or pipelined, as well as for remote systems to share learned information (e.g., dynamic IP address assignment, VoIP call establishment information).

DeepSweep™ -1 for CALEA Datasheet

PRODUCT SPECIFICATIONS

DeepSweep for Broadband CALEA:

- Fully supports CableLabs® CBIS
- Flexible subject ID format: MAC address, IP address, DHCP option 82, remote ID, subject ID, and subscriber ID, and DHCP client ID
- Support for multiple cases, multiple subjects, and delivery to multiple BIF systems

DeepSweep for VoIP CALEA:

- Fully supports T1.678v2 (DSR) for SIP-based VoIP
- Flexible subject ID format: name@host, name@IPv4/IPv6 address, phone@host, host, telephone
- Flexible collection system address format for CII and CC messages: IP address, port, TCP/UDP

Additional Surveillance Modules:

- Packet traffic: individual L3-7 packet analysis at the network/protocol level
- Packet flow: L3-7 flow-based analysis at the network/protocol level
- Sub IP: L2/2+ analysis (e.g. Ethernet, PPPoE, MPLS)
- Unusual traffic: malformed packets, improper fragments, protocol anomalies (future)
- Netflow/IPFIX: analysis of Netflow records from routers/other networking equipment (future)
- sFlow: analysis of sFlow records from switches (future)
- DNS: protocol-specific analysis of DNS lookups (e.g. specific users or database of DNS names, etc) (future)
- User Connection: protocol-specific analysis of user login, authentication, and IP assignment.
- SIP Intercept: protocol-specific analysis of SIP messages (future)
- RTP Intercept: protocol-specific analysis of RTP (VoIP) packets and flows (future)
- Email: protocol-specific analysis of common email protocols (e.g. SMTP) and email content (future)

Performance and Capacities:

- Dual 3.6Ghz Xeon host processor with 2 or 4 packet inspection accelerators
- Up to 1000 GB disk space
- Up to 1,000,000 flows, 5000 signatures, 8Gbps wirespeed surveillance

I/O:

- 2, 4, or 8 10/100/1000 identity free Ethernet surveillance interfaces
- Flexible interfaces on surveillance ports via pluggable SFPs
- 2 Gb Ethernet system ports

Power:

- Hot-swappable, redundant, auto-sensing 100-240 VAC

Physical/Mechanical:

- Rack mountable, 2U appliance
- Height: 3.45 inches
- Width: 17.14 inches
- Depth: 20 inches
- Weight: 33lbs

Environmental (preliminary):

- Operating temp: 10 c to 35 c
- Non-operating temp: -40 c to 70 c
- Non-operating humidity: 95% non-condensing

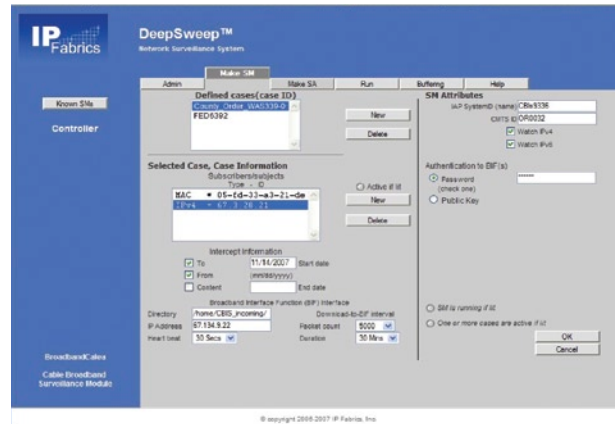
Safety (preliminary):

- UL 1950, CSA 950, IEC 950, TUV/GS EN60950

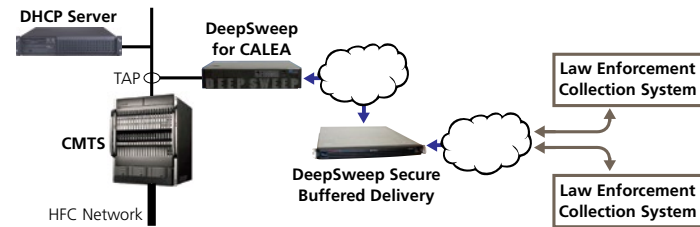
Emissions (preliminary):

- FCC Class A certified, CISPR 22 Class A tested, EN55022 Class A tested, VCCI Class A ITE tested, AS/NZS 3548

POWERFUL BROWSER-BASED INTERFACE



DeepSweep CBIS CALEA configuration



DeepSweep Secure Buffered Delivery provides the CIBS BIF buffering function and a single system can simultaneously interface with multiple law enforcement agencies

Quick and Easy to Install and Configure

DeepSweep is typically installed in a completely passive configuration with visibility to both the DHCP server and user data (e.g., CMTS). Based on IP Fabrics' innovative Surveillance Module™ architecture, the DeepSweep units are easily configured via a series of intuitive browser pages geared towards a network operator executing an intercept court order.

ORDERING INFORMATION

For more information, including pricing, availability, and ordering, please contact IP Fabrics by email at info@ipfabrics.com or at the phone number at right.



IP Fabrics, Inc.
14976 NW Greenbrier Pkwy
Beaverton, OR 97006

Tel: 503-444-2400
Fax: 503-444-2401

www.ipfabrics.com