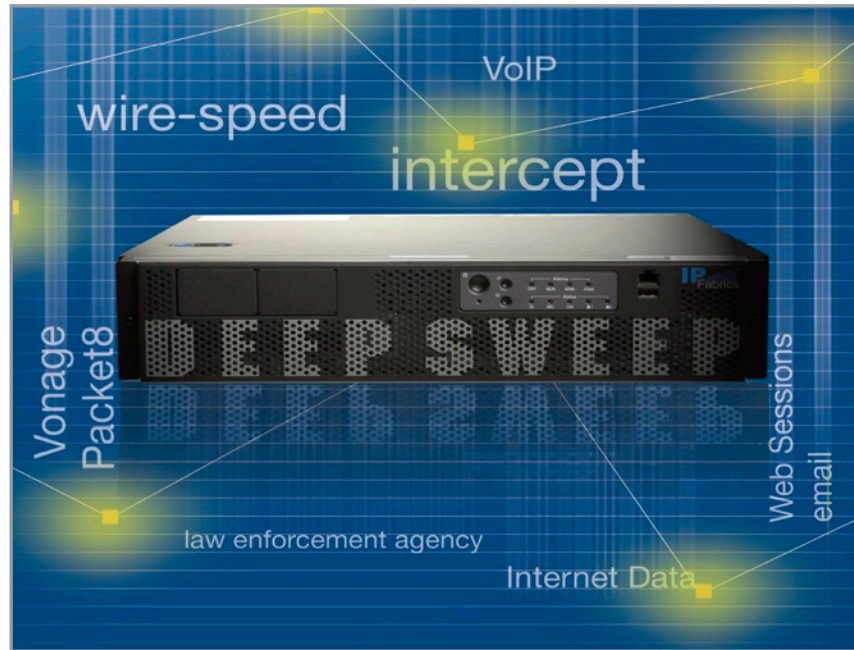


DeepSweep™ for Law Enforcement

IP Network Surveillance and Intercept System

FEATURES/BENEFITS

- **Full Support for IP-based (data/VoIP) intercepts**
Supports pen-register and full-content intercepts for VoIP and broadband data. Works with industry standard intercept collection systems.
- **Fast: Performs deep packet inspection at wire speeds**
Host processor, with multiple packet inspection accelerators (PIXLs), supports multiple 1Gbps interfaces.
- **Self-Contained: Ideal for tactical intercepts**
Incorporates probe, mediation, and administration functions in a single package.
- **Drop-In/Turnkey Solution**
Can be installed and configured in minutes using browser-based setup screens. Completely passive installation via Ethernet taps or SPAN/mirror ports. No dependency on service provider equipment.
- **Flexible and Extensible**
Open Surveillance Module™ architecture enables continued use as surveillance legislation evolves.



IP Fabrics' DeepSweep for Law Enforcement is the industry's first self-contained IP-based wiretap system for VoIP and Internet data.

High Performance Tactical Intercept Solution for Broadband and VoIP.

IP Fabrics DeepSweep™ for Law Enforcement is the first self-contained law enforcement system for IP-based intercepts. Ideal for tactical intercepts of ISP and VoIP networks, a single DeepSweep system functions as the complete intercept solution, providing the probe, mediation/delivery, and administration functions, which are commonly implemented as separate devices. Furthermore, DeepSweep offers users interoperability with law enforcement collection systems by fully implementing ATIS T1.IAS, T1.678 v2, and CableLabs @ CBIS industry standards, as well as other common delivery formats.

DeepSweep has the capability to fully inspect every network packet, so it doesn't need to rely on CMTSs, switches, routers or other probes for filtering and intercept. Additionally, the DeepSweep can assimilate and format the intercepted data and deliver it to the law enforcement agency (LEA) collection systems. Also, the DeepSweep user-interface is a set of intuitive and secure browser pages that are accessible locally or from a network-attached remote system.

Two DeepSweep Product Models

The Broadband Internet intercept model adheres to T1.IAS and CBIS industry standards and includes many key features, such as the ability to specify target/subject IDs as MAC addresses, IPv4/IPv6 addresses or subnets, DHCP option 82

addresses, subject IDs via text string, pen-register, trap-and-trace, full content intercepts, and fully configurable delivery to LEA collection systems.

The second DeepSweep model is for VoIP intercept. It adheres to the T1.678 industry standard and includes key features such as the ability to specify subject IDs by host, address, or telephone, pen-register, trap-and-trace, full content intercepts, and fully configurable delivery to law enforcement collection systems.

The VoIP intercept system works with both hosted and premise-based networks, as well as with popular VoIP services such as Vonage™. Both models support multiple concurrent intercept cases, each with potentially multiple subjects and each dynamically updatable. Additionally, both models can be easily configured to support both VoIP and Broadband Internet intercepts.

High Performance, Scalable Architecture

IP Fabrics' Surveillance Module™ architecture and underlying patent-pending multi-core virtualization technology give DeepSweep many unique advantages over basic "PC-based" surveillance systems or hard-wired ASIC-based systems.

DeepSweep's internal host processors and multi-core packet inspection accelerators allow it to monitor multiple 1Gbps Ethernet links at true wire-speed with full layer 2-7 inspection capabilities.

DeepSweep™ for Law Enforcement Datasheet

PRODUCT SPECIFICATIONS

DeepSweep for Law Enforcement Models

Broadband Internet Intercept:

- Fully supports T1.IAS, including Annex C and SHA-1 message digest, and CableLabs® CBIS
- Flexible subject ID format: MAC address, IPv4/IPv6 address, subnet, DHCP option 82, subject name/text string including UTF-8 and other encodings
- Flexible collection system delivery format for Cml and CmC messages: IP address, port, TCP/UDP and buffered
- Ability to select/limit user identification protocols, including RADIUS, IPCP, CHAP, DHCP, and PPOE

VoIP Intercept:

- Fully supports T1.678v2 (DSR) for SIP-based VoIP
- Flexible subject ID format: name@host, name@IPv4/IPv6 address, phone@host, host, tel:phone
- Flexible collection system delivery format for CII and CC messages: IP address, port, TCP/UDP

Additional Surveillance Modules:

- Packet traffic: individual L3-7 packet analysis at the network/protocol level
- Packet flow: L3-7 flow-based analysis at the network/protocol level
- Sub IP: L2/2+ analysis (e.g. Ethernet, PPPoE, MPLS)
- Unusual traffic: malformed packets, improper fragments, protocol anomalies
- Netflow/IPFIX: analysis of Netflow records from routers/other networking equipment
- sFlow: analysis of sFlow records from switches
- DNS: protocol-specific analysis of DNS lookups (e.g., specific users or database of DNS names, etc)
- User ID: protocol-specific analysis of user login, authentication, and IP assignment.
- SIP Intercept: protocol-specific analysis of SIP messages
- RTP Intercept: protocol-specific analysis of RTP (VoIP) packets and flows
- Email: protocol-specific analysis of common email protocols (e.g. SMTP) and email content

Performance and Capacities:

- Dual 3.6Ghz Xeon host processor with 2 or 4 packet inspection accelerators
- Up to 1000 GB disk space
- Up to 1,000,000 flows, 5000 signatures, 8Gbps wire-speed surveillance

I/O:

- 2, 4, or 8 10/100/1000 identity free Ethernet surveillance interfaces
- Flexible interfaces on surveillance ports via pluggable SFPs
- 2 Gb Ethernet system ports

Power:

- Hot-swappable, redundant, auto-sensing 100-240 VAC

Physical/Mechanical:

- Rack mountable, 2U appliance
- Height: 3.45 inches
- Width: 17.14 inches
- Depth: 20 inches
- Weight: 33lbs

Environmental (preliminary):

- Operating temp: 10°C to 35°C
- Non-operating temp: -40°C to 70°C
- Non-operating humidity: 95% non-condensing

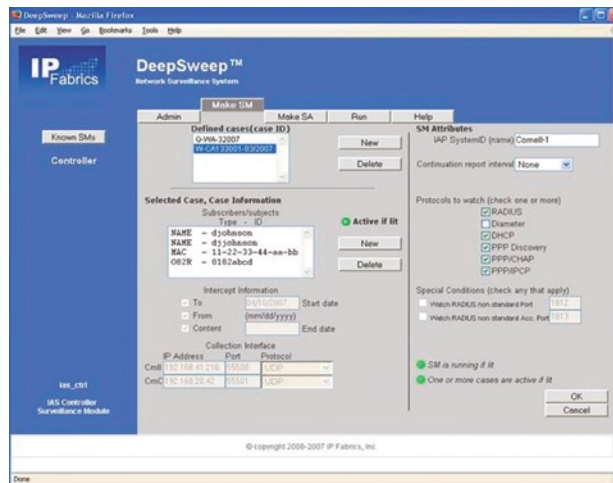
Safety (preliminary):

- UL 1950, CSA 950, IEC 950, TUV/GS EN60950

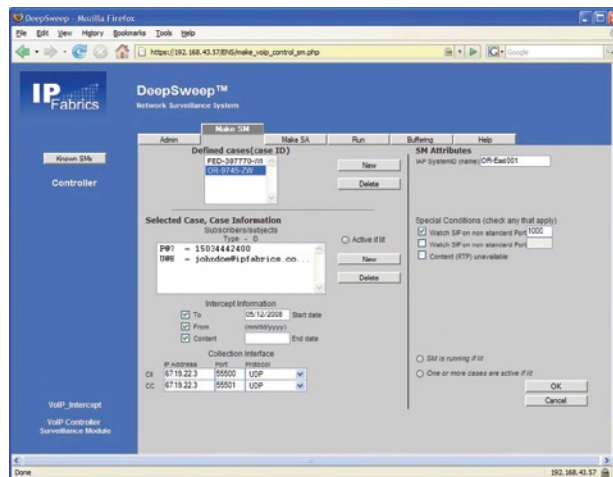
Emissions (preliminary):

- FCC Class A certified, CISPR 22 Class A tested, EN55022 Class A tested, VCCI Class A ITE tested, AS/NZS 3548 Class A tested

POWERFUL BROWSER-BASED INTERFACE



DeepSweep broadband intercept configuration



DeepSweep VoIP intercept configuration

ORDERING INFORMATION

For more information, including pricing, availability, and ordering, please contact IP Fabrics by email at info@ipfabrics.com or at the phone number at right.



IP Fabrics, Inc.
14976 NW Greenbrier Pkwy
Beaverton, OR 97006

Tel: 503-444-2400
Fax: 503-444-2401

www.ipfabrics.com

Copyright © 2008 IP Fabrics, Inc. All company and/or product names may be trade names, trademarks and/or registered trademarks of the respective owners with which they are associated. Features, pricing, availability, and specifications are subject to change without notice. IP Fabrics restricts the sale of the DeepSweep products to authorized government, military, and law enforcement agencies and their contractors, and to authorized communications carrier and service-provider companies. 080612