

DeepSweep™ Secure Buffered Delivery

FEATURES/BENEFITS

- Based on the ATIS-1000021 Standard for Data Buffering**
Provides secure, reliable delivery by temporarily buffering intercept data and allowing law enforcement agencies to securely “pull” the data to collection systems.
- Security and reliability**
Strong authentication via SSH2 with password or public key authentication. Data is strongly encrypted and reliably retrieved via SFTP.
- Integrated and stand-alone models**
Seamless upgrade to existing DeepSweep for CALEA systems, or a stand-alone system for use with ATIS-1000013.2007 and CBIS-compliant 3rd-party surveillance systems.
- High capacity and cost effective**
With up to 2000GB (usable) of RAID10 buffering capability – enough to buffer approximately 200 simultaneous intercepts for 24 hours. More cost effective than other reliable delivery methods.



IP Fabric's DeepSweep Secure Buffered Delivery is the Industry's first broadband internet access and services reliable delivery solution.

High Capacity, Standards-Based Solution for Lawful Intercept Reliable Delivery

The IP Fabric's DeepSweep™ Secure Buffered Delivery (SBD) system is the first industry standard compliant solution to ensure reliable delivery of ATIS-1000013.2007, T1.678v2, and CableLabs CBIS intercept data. Ideal for law enforcement agencies and service providers, the SBD offers users interoperability, compliance and safe harbor by fully implementing the ATIS-1000021 Standard for Data Buffering (Short Term Storage) in an Internet Access and Service LAES Environment.

DeepSweep secure buffered delivery comes in two different models. The first is as an upgrade that extends the functionality of an existing DeepSweep for CALEA surveillance system. The upgrade is provided as an easy-to-use software add-on that extends the capability of the DeepSweep for CALEA system to provide secure buffered delivery in addition to real-time streaming of intercept data.

The second DeepSweep SBD model is a stand-alone, 1U rack-mountable appliance that interfaces with compliant third-party CALEA equipment. The stand-alone appliance receives the streaming intercept data (e.g., the 'e' interface in ATIS, the 'mf' interface in CBIS) from third-party equipment and temporarily buffers it for retrieval by the appropriate Law Enforcement Agency (LEA).

Both SBD models support high-capacity buffering (up to 2000GB on the stand alone system) of high-speed intercept data (up to 1Gbps) and support multiple concurrent intercepts and delivery to multiple LEAs. The storage subsystem in the stand-alone SBD is configured as RAID10, which allows hotswapping of a failing drive with no downtime or data loss.

The Most Cost-Effective, Reliable Delivery Method

Prior to buffering technology, streaming delivery of high-volume broadband intercept data has been an expensive proposition, often requiring both service providers and law enforcement agencies to provision and consume dedicated links or risk losing data on overloaded, shared IP links. The problem is compounded by factors such as increasing subscriber internet speeds and concurrent intercepts. The DeepSweep Secure Buffered Delivery systems solve this problem by temporarily storing the intercept data and allowing the delivery to law enforcement to occur using secure and reliable transport mechanisms over existing IP links, saving both law enforcement and service providers the costs of having to use dedicated links. Additionally, a single DeepSweep Secure Buffered Delivery system can simultaneously interface with multiple law enforcement agencies.

DeepSweep™ Secure Buffered Delivery Datasheet

PRODUCT SPECIFICATIONS

DeepSweep for CALEA Secure Buffered Delivery Upgrade:

- Adds SBD function to DeepSweep IAS SM
- Adds SBD function to DeepSweep CBIS SM
- Fully supports ATIS-1000021

DeepSweep Secure Buffered Delivery Standalone Appliance

- Fully supports ATIS-1000021

Interfaces with compliant third-party CALEA systems, including those that support:

- ATIS -1000013.2007
- CableLabs CBIS CM-SP-CBI2.0-I01-070611

Security:

- Authentication via SSH2 with password or 2048-bit RSA public key authentication
- Ability to restrict access to specific IP addresses or networks
- Maintains case-specific confidentiality and access control

Performance and Capacities:

- Pentium 4 host processor
- 2000 GB (usable) RAID 10 disk storage
- Enough buffering for up to 200 intercepts for 24 hours

I/O:

- 2 10/100/1000Mbps Ethernet system ports

Power:

- 250W auto-switching 100/240 AC

Physical/Mechanical:

- Rack mountable, 1U appliance
- Height: 1.7 inches
- Width: 16.8 inches
- Depth: 22.6 inches
- Weight: 34lbs

Environmental (preliminary):

- Operating temp: 10 c to 35 c
- Non-operating temp: -40 c to 70 c
- Non-operating humidity: 95% non-condensing

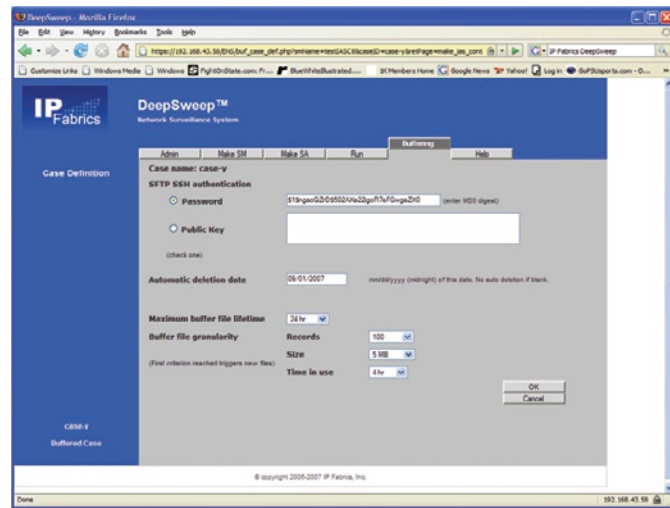
Safety (preliminary):

- UL 1950, CSA 950, IEC 950, TUV/GS EN60950

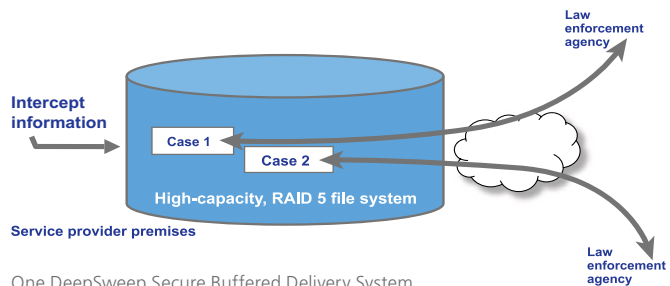
Emissions (preliminary):

- FCC Class A certified, CISPR 22 Class A tested, EN55022 Class A tested, VCCI Class A ITE tested, AS/NZS 3548 Class A tested

POWERFUL BROWSER-BASED INTERFACE



DeepSweep Secure Buffered Delivery configuration



One DeepSweep Secure Buffered Delivery System can simultaneously interface with multiple law enforcement agencies

Quick and Easy to Install and Configure

Both versions of the DeepSweep Secure Buffered Delivery system are based on IP Fabric's innovative Surveillance Module™ architecture and are easily configured via a series of intuitive browser pages geared towards a network operator executing an intercept court order. The SBD interface includes options for specifying various intercept buffering attributes such as the case access rights, security, and disk management.

ORDERING INFORMATION

For more information, including pricing, availability, and ordering, please contact IP Fabrics by email at info@ipfabrics.com or at the phone number at right.



IP Fabrics, Inc.
14976 NW Greenbrier Pkwy
Beaverton, OR 97006

Tel: 503-444-2400
Fax: 503-444-2401

www.ipfabrics.com